



Alma Lasers is a global innovator of laser, light-based, radiofrequency and ultrasound technologies for the aesthetic and surgical markets. We enable practitioners to offer safe and effective procedures while allowing patients to benefit from state-of-the-art, clinically proven solutions and treatments.

**Ask your practitioner today about the SINON Q-Switched Ruby Laser System for pigmentation and multi-colored tattoo removal.**

To learn more about Alma Lasers, visit us at:

[www.almalasers.com](http://www.almalasers.com)

**Alma Lasers GmbH**

Nordostpark 100-102  
90411 Nuremberg, Germany  
Tel. + 49 911 / 89 11 29-0  
Fax + 49 911 / 89 11 29-99  
Email: [info@almalasers.com](mailto:info@almalasers.com)  
[www.almalasers.com](http://www.almalasers.com)

PBAP09061601

©2016 Alma Lasers. All rights reserved. Alma Lasers, its logo, and SINON are trademarks or registered trademarks of Alma Lasers in the United States and/or other countries. Product specifications are subject to change without notice.

Designed by [Three Bears Creative Agency](#)



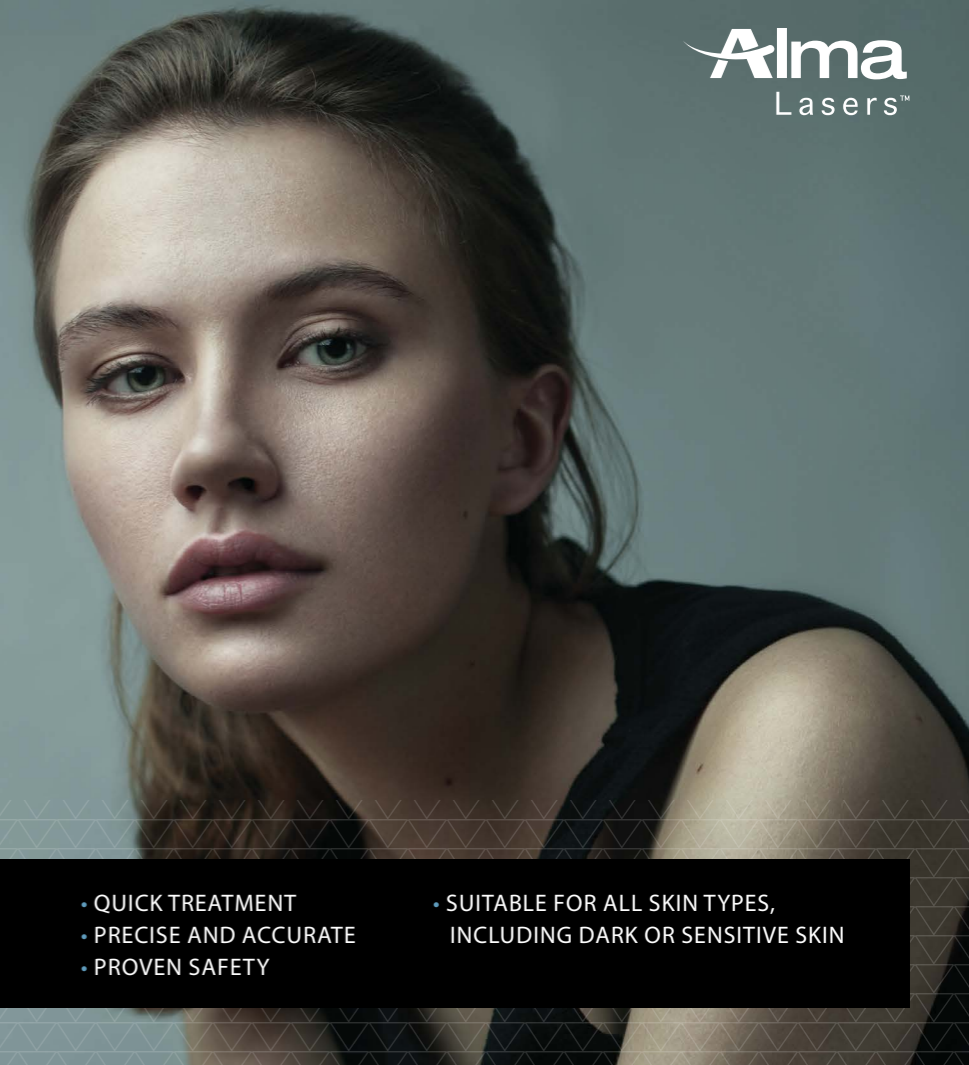
CONNECT WITH  
ALMA LASERS



SINON



THE SAFEST AND MOST PRECISE  
LASER TREATMENT SOLUTION  
AVAILABLE FOR PIGMENTED  
LESIONS AND MULTI-COLOR  
TATTOO REMOVAL



**AESTHETIC  
PRECISION**

Q-SWITCHED  
RUBY LASER SYSTEM

- QUICK TREATMENT
- PRECISE AND ACCURATE
- PROVEN SAFETY
- SUITABLE FOR ALL SKIN TYPES,  
INCLUDING DARK OR SENSITIVE SKIN

## ELIMINATE PIGMENTATION AND UNWANTED TATTOOS SAFELY AND EFFECTIVELY WITH THE SINON Q-SWITCHED RUBY LASER SYSTEM

Tattoos were designed to be permanent. But they don't have to be. If you have a tattoo that you no longer want or that is no longer relevant to your life today, or if you have pigmentation concerns, there is a solution that's safe, powerful and effective for regaining clear, ink-free skin.

SINON is the quickest, safest and most precise laser treatment solution available for pigmentation and multi-color tattoo removal. Based on the Ruby laser and advanced Q-Switched technology, SINON treats pigmentation and removes multi-colored tattoos, including stubborn ink colors such as lime-green, sky-blue and teal, revealing healthy, color-free skin with minimal risk of scarring or permanent hypopigmentation.

*"The removal of tattoos with the SINON Q-switched ruby laser system yields excellent results for almost all colors. With high energy output and the optimal customization, often only a few treatments are needed. The removal of natural pigment spots is achieved even faster."*

Prof. Uwe Paasch,  
University Clinic of Leipzig, Germany



### The Technology

- ▽ The Ruby laser has a proven track record as the most effective Q-switched laser for treating all depths of pigmentation as well as multi-colored tattoos- with minimal side effects.
- ▽ SINON uses Q-switched Ruby laser technology to deliver high-powered, ultra-short pulses of light through the skin.
- ▽ The light energy is applied using a fractional non-ablative method. Micro beams of laser light create narrow columns of heat deep within the skin, leaving the surface of the skin unharmed. This makes the treatment much safer and allows the skin to heal faster.
- ▽ The Q-switched laser mechanically vibrates and breaks up the pigment in the skin or the ink particles in the tattoo.
- ▽ As the area heals, the immune system flushes away the damaged pigmented particles and the skin returns to its natural color.

### Quick Treatment. Effective Results.



**Tailored Treatment** - with precise ink targeting and high power, SINON offers a tailored solution according to your specific tattoo or pigmentation type, depth and color.



**Quick Results** - with the most advanced technology available, SINON removes tattoo pigments in fewer treatments for quicker results.



**Proven Safety Record** - SINON combines the Q-Switched Ruby laser's long track record of proven safety with new state-of-the-art innovations that maximize safety of the treatment.



**Dark or Sensitive Skin** - treatments are safe and effective for darker skin types as well as for sensitive skin.



**Maximum Comfort** - simultaneous cooling technology reduces pain, prevents burns and maximizes treatment comfort.



**No Downtime** - you can return to your normal activities immediately after treatment.