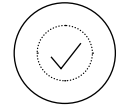
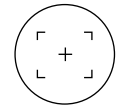


THE BURANE II ADVANTAGE



All-rounder for Aesthetics

Gold standard for skin resurfacing with optimal wavelength, excellent results and minimal side effects, high patient acceptance



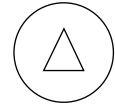
Fast and Precise

Six spot sizes for exact treatments: 1.0 to 6.0 mm, fast treatments due to high power and pulse repetition rates up to 30 Hz, pulse energy up to 2 J (BURANE II XL up to 2.5 J)



Profitable Investment

Exceptionally versatile system with wide application range, expandable to BURANE II XL, with Triple Mode Technology, option for fractional treatments, long lifetime through technically stable components



Triple Mode Technology

BURANE II XL with Ablation Mode, Thermal Mode (patented, Combination Mode for ablation, with thermal pulses



Fractional System

Expandable to a fractional system (BURANE II XL), gentle treatment with fast healing, no local anesthesia required.



Easy Handling

Easy selection of spot size, guided input, intuitive parameter settings. Large, color touch screen, mirror arm with wide positioning range, cold air cooling can be mounted to the handpiece

Listen to our experts:



"The Er:YAG laser BURANE II has become an **indispensable device** in our practice. The **easy-to-control, layered ablation** has proven itself in more than 1,200 treatments in our practice."

Dr. Clemens Fritsch, Düsseldorf, Germany



"The Er:YAG laser system BURANE II XL is such a **flexible system that we use it almost daily** in our outpatient laser clinic."

Prof. Uwe Paasch, University Hospital Leipzig, Germany



The **Triple Mode Technology** of BURANE II XL has proven to be a **real advantage in my everyday business**. The laser system has a controllable Thermal Mode which I can use sub-ablative as well as combined with ablation. I can say that the **positive results** in both sub-ablative treatments and resurfacing combined with a **hassle-free handling** make BURANE II XL a valuable tool for my practice."

Dr. Christine Dierickx, Boom, Belgium



The decision for BURANE II XL was the right one: the additional thermal function that can also be combined with ablation offers **completely new possibilities in aesthetic dermatology, for skin resurfacing and for treating scars.**"

Dr. Jagdish Sakhiya, M.D, Sakhiya Skin Clinic, Surat, India

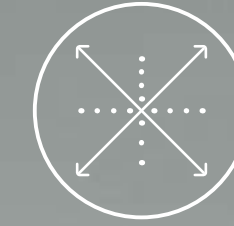
TECHNICAL SPECIFICATIONS

Alma Lasers™

Laser type	Er:YAG
Wavelength	2,940 nm
Beam diameter	1.0 / 2.0 / 3.0 / 4.0 / 5.0 / 6.0 mm
Energy	up to 2 J (BURANE II XL - up to 2.5 J)
Repetition rate	up to 30 Hz
Power requirements	230 V, 16 A, 50 Hz
Dimensions (L x W x H)	84 x 35 x 102 cm
Compliance	EC Medical Device Directive (MDD) 93/42/EEC (CE mark), FDA/US 510 k*

Technical specifications are subject to change without notice.
*Intended use may differ from this brochure.

Alma Lasers™



BURANE II
BURANE II XL

LASER SYSTEM FOR
CLASSIC AESTHETIC
APPLICATIONS

Alma Lasers GmbH
Nordostpark 100-102
90411 Nuernberg, Germany
Tel. + 49 911 / 89 11 29-0
Fax + 49 911 / 89 11 29-99
Email: info@almalasers.com
www.almalasers.com

PBAP24011601

© 2016 Alma Lasers, Ltd. All rights reserved. Alma Lasers, its logo, and BURANE are trademarks or registered trademarks of Alma Lasers, Ltd. In the United States and/or other countries. Product.

Designed by Three Bears Creative Agency | www.3bears.co.il



CONNECT WITH
ALMA LASERS



AESTHETIC
PRECISION

FOR SKIN RESURFACING, SKIN REJUVENATION,
SMOOTHING OF SCARS AND REMOVAL OF
SKIN ALTERATION



INTRODUCTION

Universal Treatment System

The Erbium:YAG laser system BURANE II is the universal treatment solution for classic ablative applications in aesthetic dermatology. BURANE II's wavelength of 2,940nm allows it to precisely ablate upper skin layers in controllable steps – without thermal damage to the surrounding tissue. The indispensable all-rounder in laser dermatology is now even more user-friendly with a new look and extra technical features.

Fractional in no Time at All

In just a couple of seconds, you can transform BURANE II XL into a fractional laser system by mounting the optional handpiece. The FX12 (12 mm spot size) induce microscopically small ablation zones with adjustable depth. Fractional treatments with BURANE II XL have very good clinical effects on scars and wrinkles. The gentle treatment is popular due to its fast healing and minimal risk of side effects.

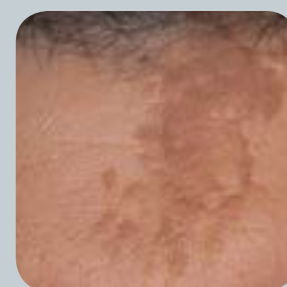
Triple Mode: BURANE II XL

The Triple Mode Technology of BURANE II XL provides the functions you need for a wide range of aesthetic treatments:

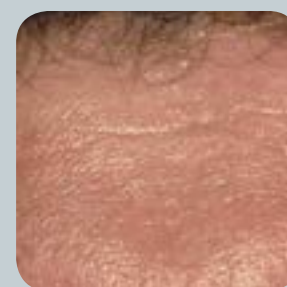
1. The Ablation Mode for classic ablative procedures.
2. The patented Thermal Mode for controlled induction of heat in deeper skin layers.
3. The unique Combination Mode which combines ablation and thermal pulses.

Wide Application Range

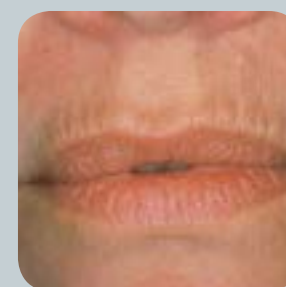
The Er:YAG laser BURANE II is ideally suited for ablative applications such as laser peelings and the removal of superficial lesions and pigmented skin alterations in only one treatment. Wrinkles and scars – also acne scars – are visibly reduced. The Triple Mode Technology of BURANE II XL provides additional treatment options. You can use the Thermal Mode for non-ablative skin rejuvenation: The heat induced by the Thermal Mode tightens the collagen structure and reduces fine wrinkles.^{1,2} It smoothes scars and decreases their redness, tenseness and itchiness.³ The Combination Mode allows you to treat deeper wrinkles and scars through the combination of ablative and thermal pulses. The optional FX12 handpiece give you the possibility to additionally provide fractional treatments.



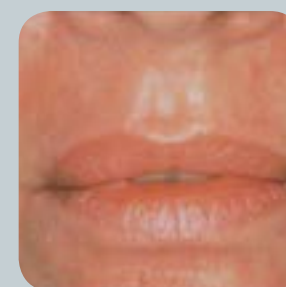
BEFORE



AFTER



BEFORE



AFTER

Courtesy of Prof. Roland Kaufmann, Frankfurt, Germany

Treatment in Combination Mode



FRACTIONAL HANDPIECE FOR BURANE II XL

The Fractional handpiece transform BURANE II XL into a fractional laser system. Only microscopically small areas of the skin surface are ablated, with adjustable depth between less than 50 µm and 1 mm. The ideal balance of ablated and non-treated tissue makes this treatment especially gentle and speeds up the healing process. Depending on the indication, you can choose between treatments in fractional Ablative Mode or fractional **combination mode**, which additionally induces heat in the deeper skin layers, stimulating collagen neo-synthesis. Optimal indications for the fractional laser handpiece are gentle skin rejuvenation of smaller areas, fractional full face treatments and targeted, selective treatment of wrinkles, scars and unwanted pigmentations.^{4,5}

Treatment with BURANE II



BEFORE



AFTER



Courtesy of Dr. Susanne Lorenz, Bielefeld, Germany.

¹ Kunzi-Rapp K, Dierckx CC, Cambier B, Drosner M. Minimally invasive skin rejuvenation with Erbium:YAG laser used in thermal mode. *Lasers Surg Med* 2006; 38 (10): 899-907
² Kunzi-Rapp K, Wortmann S, Gottlöber P, Diebold R, Rupp M, Stock K, Russ D, Hibst R, Steiner R, Peter RU. Treatment of scars and rhytides on the base of thermal induced collagen reactions by a modified Er:YAG-laser. *J Cut Laser Therapy* 2001; 3: 32-33
³ Jacques Rogge F, Cambier B. Safe and effective treatment of problem scars with the purely thermal non-ablative Er:YAG laser scar mode. *J Cosmet Laser Therapy* 2008; 10 (3): 143-147
⁴ Bodendorf MO, Grunewald S, Wetzig T, Simon JC, Paasch U. Fractional laser skin therapy. *JDDG* 2009; 7 (4): 301-308
⁵ Bodendorf MO, Willenberg A, Anderegg U, Grunewald S, Simon JC, Paasch U. Connective tissue response to fractionated thermo-ablative Erbium:YAG skin laser treatment. *International Journal of Cosmetic Science* 2010; 32 (6): 435-445